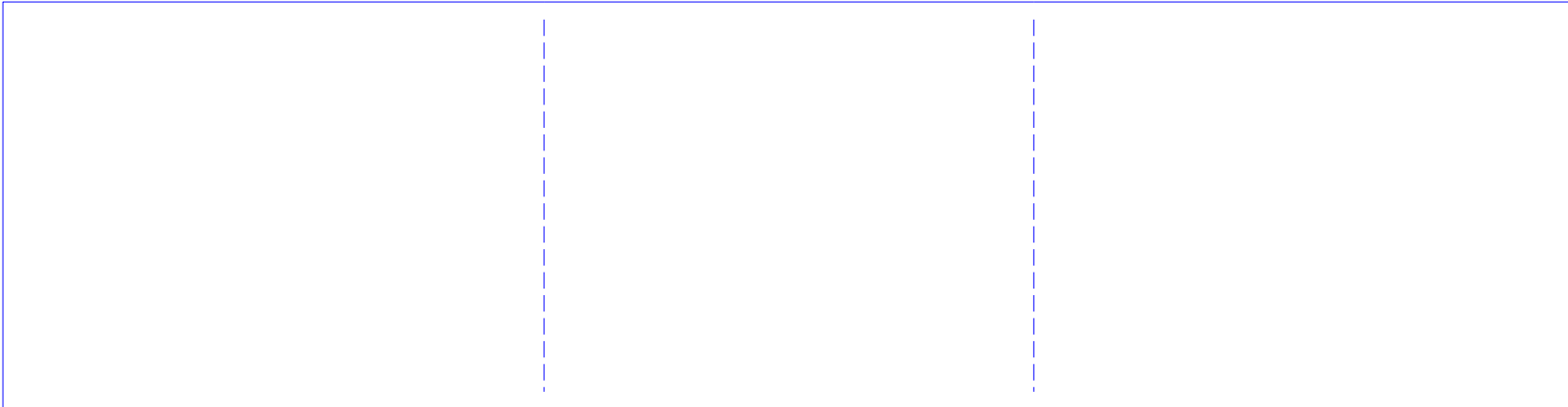




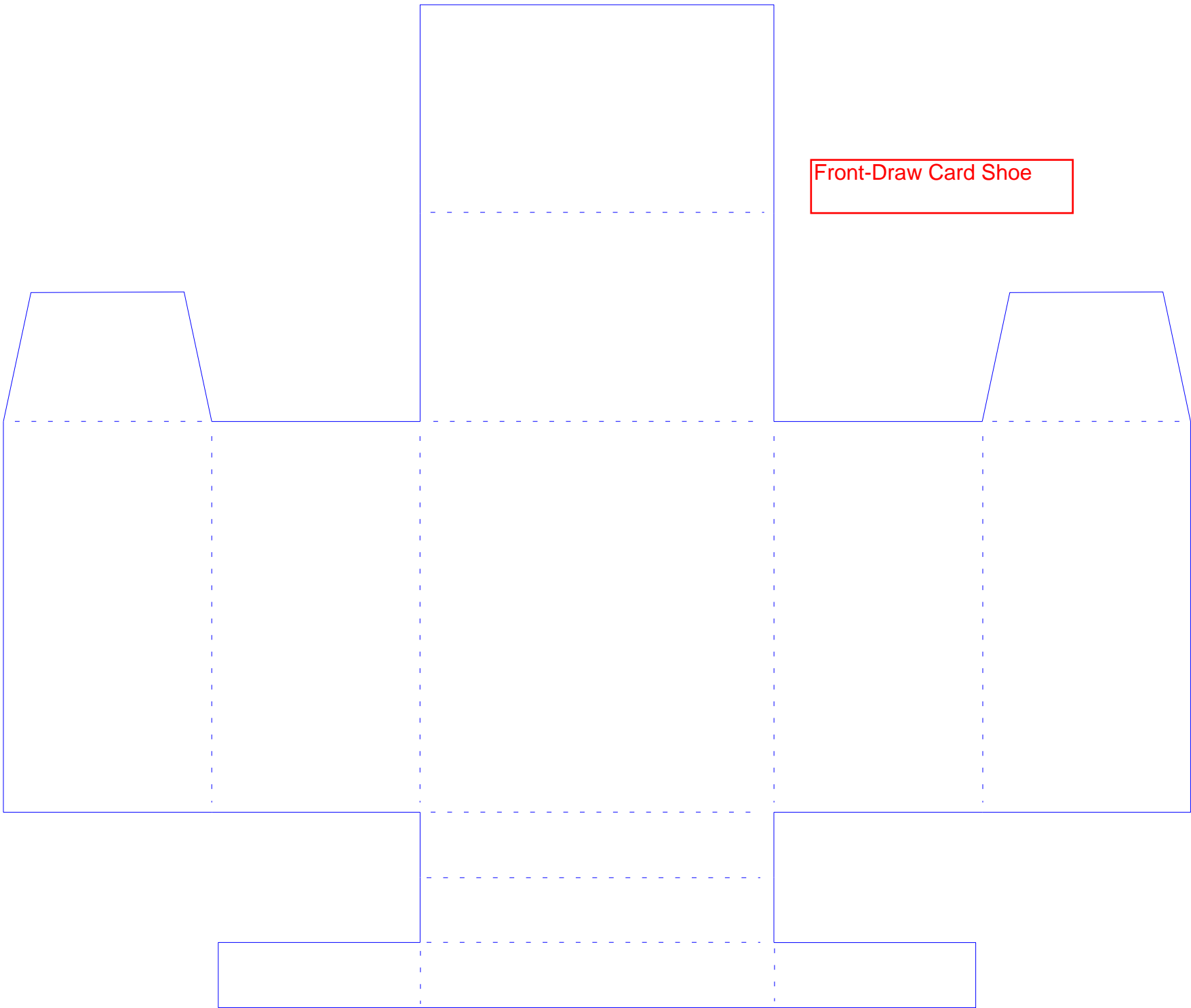
Extra Height Walls
When your deck is taller than the standard shoe height. Fold these and insert into the shoe to raise to 2.25"

Above - Side Draw Extra Height Walls
Below - Front Draw Extra Height Walls

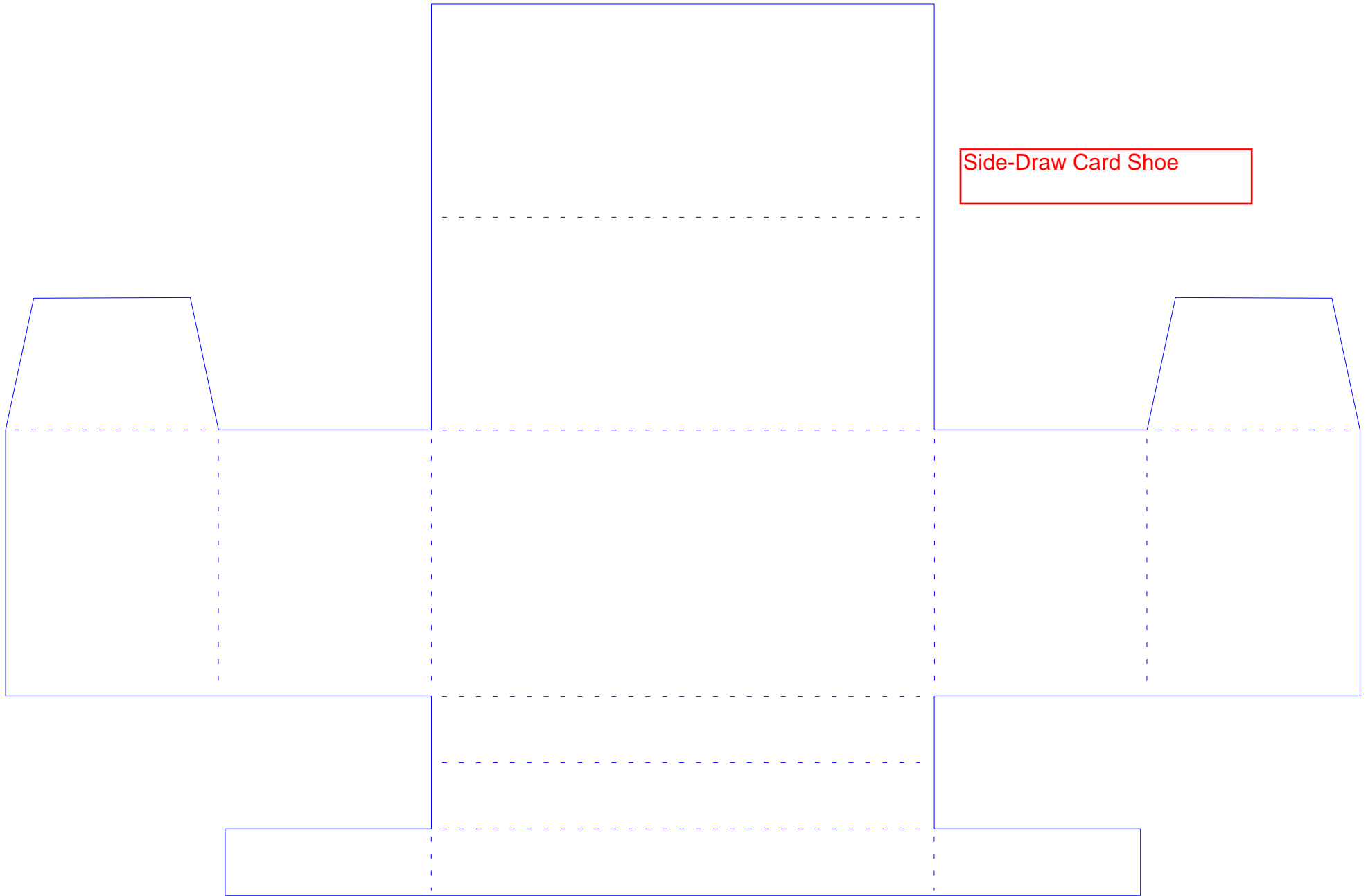


Ones Upon a Game - Card Shoes.pdf

On all pages, cut solid lines, score and fold on the dashed lines. Assembly video available on youtube channel "Ones Upon a Game"



Front-Draw Card Shoe



Side-Draw Card Shoe